



# BEVERAGE-AIR

Project: _____	AIA#
Item: _____	
Location: _____	SIS#
Approved: _____	

**MARKETEER™ MERCHANDISERS**  
 MT41-54 Black Sliding Door Model  
 Hydrocarbon Series

**MODEL:**  
**MT41-54-1-SDB**

**MT41-54™ MERCHANDISER: SLIDING DOOR MODEL**



**5 Year Parts/Labor Warranty Available**  
**7 Year Compressor Warranty**

### CABINET CONSTRUCTION

- Standard cabinet exterior finish is prepainted black steel
- Heavy duty interior construction includes prepainted white steel
- Mechanical temperature control
- Modern one piece grille
- Double pane lowE argon filled glass door feature outside pane that is tempered for added safety
- Self-closing sliding glass doors, black door frames regardless of exterior color
- Pocket door handles
- LED lighting
- Six (6) epoxy coated shelves
- Leveling feet

### OPTIONS & ACCESSORIES

- 3 Year parts/labor standard, additional 2 year warranty available
- Extra shelves and clips
- 3" Casters

### REFRIGERATION SYSTEM

- Uses environmentally friendly, energy efficient R290 refrigerant, and meets all regulatory requirements for CARB, SNAP, DOE & more
- Condenser is designed to be low maintenance, and energy efficient
- Automatic, non-electric defrost
- Epoxy coated evaporator coil
- Maintains product temperatures between 32°F and 44.6°F



Please verify qualifying units by visiting:  
[www.energystar.gov/cfs](http://www.energystar.gov/cfs)

3779 Champion Blvd., Winston-Salem, NC 27105  
 1-888-845-9800 Fax: 1-336-245-6453  
 Beverage-Air.com Sales@bevair.com



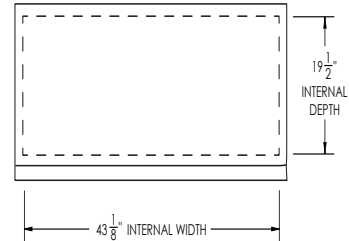
# BEVERAGE-AIR

## Glass Sliding Door Model Model: MT41-54-1-SDB

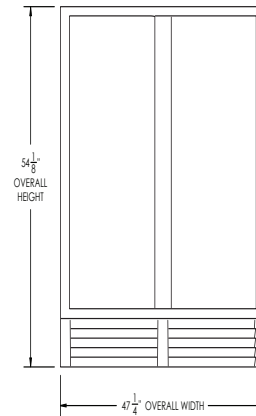
MODEL	MT41-54-1-SDB
<b>EXTERNAL DIMENSIONAL DATA</b>	
Width Overall	47 1/4"
Depth Overall	21 3/4"
Height Overall	54 1/8"
Number of Doors	2
<b>INTERNAL DIMENSIONAL DATA</b>	
NET Capacity (cubic ft.)	19.5
Capacity 20 oz	180
Internal Width Overall (in)	43 1/8"
Internal Depth Overall (in)	19 1/2"
Internal Height Overall (in)	40 1/4"
Internal Height Useable (in)	31 7/8"
Number of Shelves	6
<b>ELECTRICAL DATA</b>	
Full Load Amperes 115/60/1	3.1
<b>REFRIGERATION DATA</b>	
Horsepower	1/4
Energy Consumption	1.710 Kwh / 24h
Capacity (BTU/Hr)	1900
Heat Rejection (BTU/Hr)	2850
Charge (lbs/grams)	0.1102/50
<b>WEIGHT DATA</b>	
Gross Weight - Crated	289 lbs
Height - Crated	58"
Width - Crated	51"
Depth - Crated	27"

### Model Views

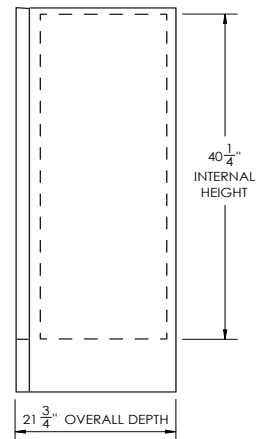
Clearances: 4" Top, Rear, Left and Right Side



### PLAN VIEW



### ELEVATION VIEW



### SIDE VIEW

### ELECTRICAL CONNECTION



115/60/1  
NEMA 5-15P

Unit pre-wired at factory and include 8' long cord and plug set.

